

## Family Business Loan Scheme

Many people in the Lower Shire have valuable skills, but often lack the finances to buy the materials required, and also to travel to a market to sell their goods.



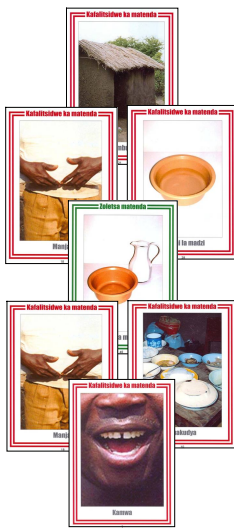
Family Mat and Basket-making Business

We are providing small interest-free loans which will enable skilled families to set up profitable businesses. A renewable six-month contract is also secured for the sale of the items made.

Current businesses are: Tinsmiths, mat and basket-making, carpentry, metal poultry feeder-making, and tailoring. Loans range from £61.25–£126.50.

## Teaching about Disease Transmission

Much of the sickness in the villages of Malawi could be easily avoided. We are providing sets of 48 A5-sized laminated cards which show how excrement is passed from one person to the mouth of another. They also show how this spread of disease can be blocked.



Disease Transmission Cards

This teaching is shared in villages by voluntary workers who have been trained and provided with a bicycle.

## Miscellaneous Projects

**Forestry Projects:** We provide tree seedlings, together with teaching on how trees can protect the environment and regulate rainfall.

**Agro-forestry:** We provide Msangu trees for growing among edible plants to improve the fertility of the soil.

**Bicycle Ambulances:** We provide bicycle ambulances for taking sick people to hospital,



Bicycle Ambulance at Chinsomba Village

which may be many miles away. Each ambulance is used without cost by the whole village, and costs £332.

*We have brochures which describe all our current projects, together with a set of A5-sized leaflets, which give more information and larger photographs than these smaller brochures. We also operate an Alternative Gift scheme which will enable you to buy gifts for family or friends that will benefit the people in Malawi. If you would like to receive any of these leaflets or brochures, or our regular newssheet, please contact us at the address given below.*

## Faith in Action

Emmanuel Cottage,  
Rusper Road,  
Ifield, Crawley,  
West Sussex RH11 0LN

Phone: 01293 526424  
Fax: 01293 533022  
Registered Charity  
No.293961

# Faith in Action

Faith in Action works in close partnership with local churches in Africa in order to achieve the following objectives: First, to strengthen, support and equip local pastors so that they can nurture their congregations. Second, to envision, encourage and empower people to believe in their potential to prosper. Third, to significantly reduce poverty through funding appropriate and sustainable projects and businesses. Fourth, to reduce sickness through the provision of clean drinking water, and providing education about disease transmission. And fifth, to provide appropriate care and support for orphaned children.



Working in Partnership  
with the Church in Africa

## Current Projects

### Relief Supplies

We are sending regular consignments of relief aid to Malawi. The contents of these consignments are all packed by different packing groups, who collect, prepare, and pack good quality second-hand items according to instructions which we provide. Each item is washed and packed to look like new.

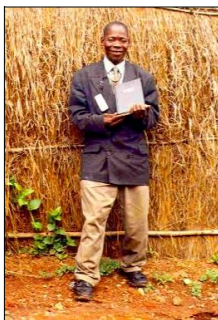
A Container Consignment being unloaded in Malawi

We have now sent 129 20ft container consignments to East Africa.

### Christian Resources

Most churches in Africa are growing very fast, but they often lack the resources to nurture the new believers who are joining their churches. We are providing Bibles, cassette players, taped sets of the New Testament in Chichewa, and blank cassette tapes for recording Christian teaching.

This cassette ministry should provide significant help to those who are not able to read. Groups can also listen to tapes when they return from their fields, and it is too dark to read.



Pastor Golasi with a new Bible



Foster Parents, Children, Goats and Kraal in Thimu Village

We provide one male and two female goats for families who foster orphaned children. Each goat costs £20.50 each. Families will build their own kraal, and give their first kid to another family. Goats thrive in Africa, and need very little veterinary care. Each female goat will produce two kids twice each year. If all these kids are sold, a yearly income of £164 can be gained. However, if one female kid is kept each year to build their stock of breeding females, a yearly income of £881.50 can be gained by the tenth year.

### Wells

During years of drought, women may have to walk for six hours to find water, and many water-sources are contaminated. Water is carried in large buckets on their heads, which can cause neck and spine injuries.

Our wells are built to a depth of 40 metres, and so they should not dry up, even during drought years. We use an Afridev pump, the spare parts for which can be purchased in local markets. We also train a committee from each village to maintain the well. Each well costs £1,657.



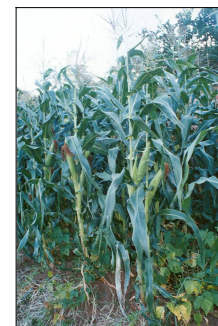
Well at Machilika Village

### Orphan Support

We provide one male and two female goats for families who foster orphaned children.

### Crop Diversification

The staple food grown in southern Malawi is maize, but this crop takes 135-145 days to mature, and



Mature Masika Maize Plants

requires good rainfall. Over recent years this crop has consistently failed. We are providing seven different crops which mature quicker, need less rain, and produce higher yields than local maize. For example, Masika maize matures in almost half the time, and produces a yield six times higher than local maize.

Other crops, such as Soya beans and ground nuts provide protein, and also add nitrogen to the soil.

### Windmill Pumps

Windmill pumps have the potential to reverse the drastic consequences of climate change in Africa. One windmill will enable farmers to irrigate 50 acres of land, and also to grow three crops each year instead of one.

These windmills drive a pump which draws water up through a well, and into a concrete reservoir. Plastic piping circulates the water to farmers' fields on a rotation basis. One windmill costs £8,786 to buy and install. It can produce £135,000 worth of crops each year.



Windmill Pump and Well pipes water to a Reservoir